

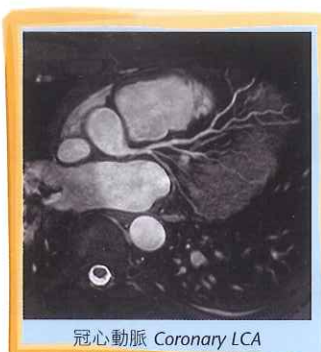
香港港安醫院致力提供多元化的醫療服務，並引入先進的醫療儀器，為病人提供快速準確的診斷，從而迅速確定治療方案。

本院放射診斷部最近引入嶄新先進的磁力共振掃描機，配備特別的裝置，能快速地完成掃描，對檢測心血管疾病及癌腫瘤有重大價值。

此嶄新儀器並無輻射，能有效分析、診斷及處理下列疾病：

1. 心臟病

- 缺血性心臟病
- 心肌病
- 心肌梗塞
- 先天性心臟病



2. 腦血管疾病及神經系統疾病

- 中風
- 大動脈疾病（包括動脈瘤、解剖、動脈粥樣硬化及狹窄）
- 腦瘤及神經退化型疾病

3. 骨骼及軟組織

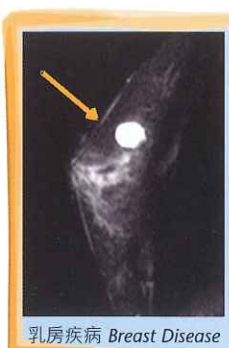
4. 腎病

- 腎動脈疾病
- 腫瘤
- 發炎

5. 乳房疾病

6. 婦科疾病

7. 男性相關的疾病



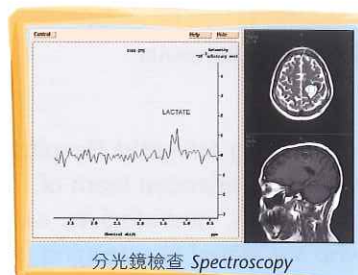
8. 分光鏡檢查

9. 全身掃描

10. 肝臟病變

11. 虛擬結腸鏡檢查

12. 其他各種疾病



本院具有一隊優秀及經驗豐富的放射診斷醫生、神經科醫生、心臟科專家及專業磁力共振掃描機操作員。他們曾在海外受訓，能熟練地使用此部嶄新的儀器。

病人一般需要醫生轉介方可使用此項服務。如沒有醫生轉介者，本院可提供資料以作參考。

使用磁力共振掃描時注意事項

- 掃描前可進食。
- 不要穿著附有金屬拉鍊或扣的衣服，避免配戴首飾及化妝。
- 大部份掃描只需二十至六十分鐘。掃描過程中除有少許聲音外，是完全無痛及無副作用的。親友可陪同病人進入掃描室，這是絕對安全的。
- 如病人患有幽閉恐懼症，請預先通知本院。
- 檢查必需預約安排。

下列人士不適宜使用磁力共振掃描

- 使用心臟起搏器者。
- 懷孕三個月內（其他懷孕病人必需得到醫生要求及病人簽署同意書）。
- 有脊髓神經刺激器或植入人工耳蝸者。
- 有顱內的動脈瘤夾者（外科手術夾、釘、縫合線及義肢，均可安全通過掃描）。
- 眼內有金屬片者。

Magnetic Resonance Imaging 磁力共振掃描 (MRI)



Hong Kong Adventist Hospital is committed to bring success to our medical programs in identifying disease early so that prompt treatment can be instituted.

We have recently upgraded our Diagnostic Imaging Department with a state-of-the-art MRI scanner. This new scanner is valuable in detecting cardiovascular disease and the presence of cancer, and is equipped with special features to allow scanning to be performed in sub-second, which is often required for successful heart and whole body imaging.

The introduction of this new advanced technology without radiation hazard has enabled effective diagnosis and management of the following disorders:

1. Cardiac Disease:

- Ischemic Heart Disease
- Cardiomyopathy
- Myocardial Infarct
- Congenital Heart Disease



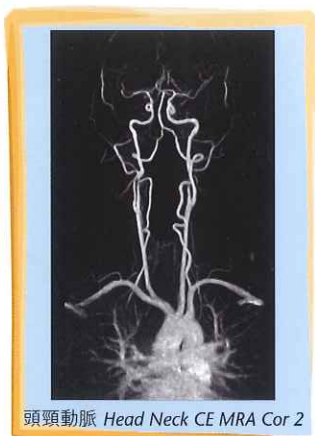
2. Cerebro-vascular diseases and neurological disorder

- Stroke
- Great vessel disease including aneurysm, dissection, atherosclerosis and narrowing.
- Brain tumor and neuro degenerative disease

3. Bone, Joint & Soft Tissues

4. Renal Disease:

- Renal Artery Stenosis
- Tumor
- Infection



5. Breast Disease

6. Gynecological Disease

7. Male-related Diseases

8. Spectroscopy

9. Whole Body Imaging

10. Liver Lesion

11. Colonoscopy

12. Miscellaneous



Hong Kong Adventist Hospital has an experienced team of radiologists, neurologists, cardiologists and technicians who are skilled at screening patients in MRI.

Our team has undergone extensive training overseas to use this new technology.

Patients benefiting from this new service are usually referred by their doctor. However, for those who do not have a regular doctor, the hospital can provide a contact for you.

During your visit for MRI:

- You can eat and drink as usual.
- Wear clothing which does not have metal zippers or snap. Avoid wearing jewelry and make-up.
- Most scans will last 20 to 60 minutes. It is completely painless and has no side effects but you will experience some noise during scan. You may bring someone to the MRI scanning room with you and it is absolutely safe.
- Let us know if you are claustrophobic.
- An appointment is necessary for the scan.

Please note contraindications for MRI:

- Pacemakers.
- First trimester of pregnancy (other pregnant patients done only at physician's request and signing of consent form).
- Spinal cord stimulators or cochlear implants.
- Intracranial aneurysm clips (most other post surgical metal clips, staples, sutures, and prosthesis can safely scanned).
- Metal fragments in the eye.

路線圖 Map



Bus 巴士

- 6, 15, 66 Central Bus Terminal 中環巴士總站
- 76 Causeway Bay 銅鑼灣
- 19, 41A, 63 North Point 北角

Minibus 專線小巴

- 5, 24M

Taxi 計程車

Available to and from the front entrance of Hospital
乘計程車可直達本院大門前

Parking 停車場

Parking is available for a fee for patients and visitors
本院設有收費停車場於病人及其家人使用

Diagnostic Imaging Department 放射診斷部

Address 地址: B/F, 40 Stubbs Road, Hong Kong
香港司徒拔道40號港安醫院地庫

Phone 查詢電話: (852) 2835-0515

Website 網址: www.hkah.org.hk

The First Hong Kong Hospital to be Accredited by JCI in 2006
Trent Accreditation since 2000

全港首間榮獲國際JCI評核認可醫院 (2006)
英國國家衛生服務「卓越」評核認可 (2000)