

## Coronary Heart Diseases caused

**17.9 million**

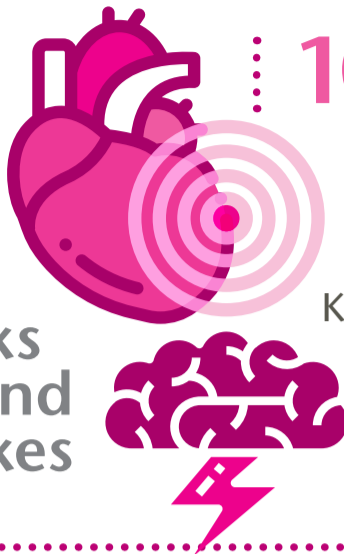
deaths in 2016, representing

**31%** of all global deaths



**85%**

of all CVD deaths are due to heart attacks and strokes



**10.6 daily deaths**

in 2017 in Hong Kong



**30,000 deaths**

over last 10 years in Hong Kong

## High Risk Group

**40  
~  
60**

40 - 60 years old

Diabetes



High Blood Pressure

Obesity



High Cholesterol

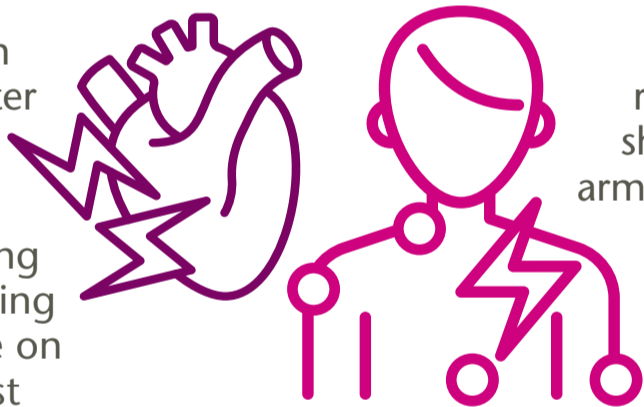
Smoking



Physical Inactivity

## Chest Pain Symptoms Can Happen ANY Time

- pain in the center of the chest
- a feeling of crushing pressure on the chest



- pain that radiates to the shoulder, neck, arms, back or jaw
- pain that lasts longer than a few minutes



## RAPID ACCESS CHEST PAIN CLINIC

**10 MINS**

**24/7**

**HIGH-LIGHTED FEATURES**

**90 MINS**

- 10 minutes Prompt Assessment
- All-year-round 24/7 Services
- Direct Emergency Channel bypass registration
- Full support by Caring Specialists
- Wide Range of Treatment Packages
- Diagnosis to Wire Crossing Time < 90 minutes

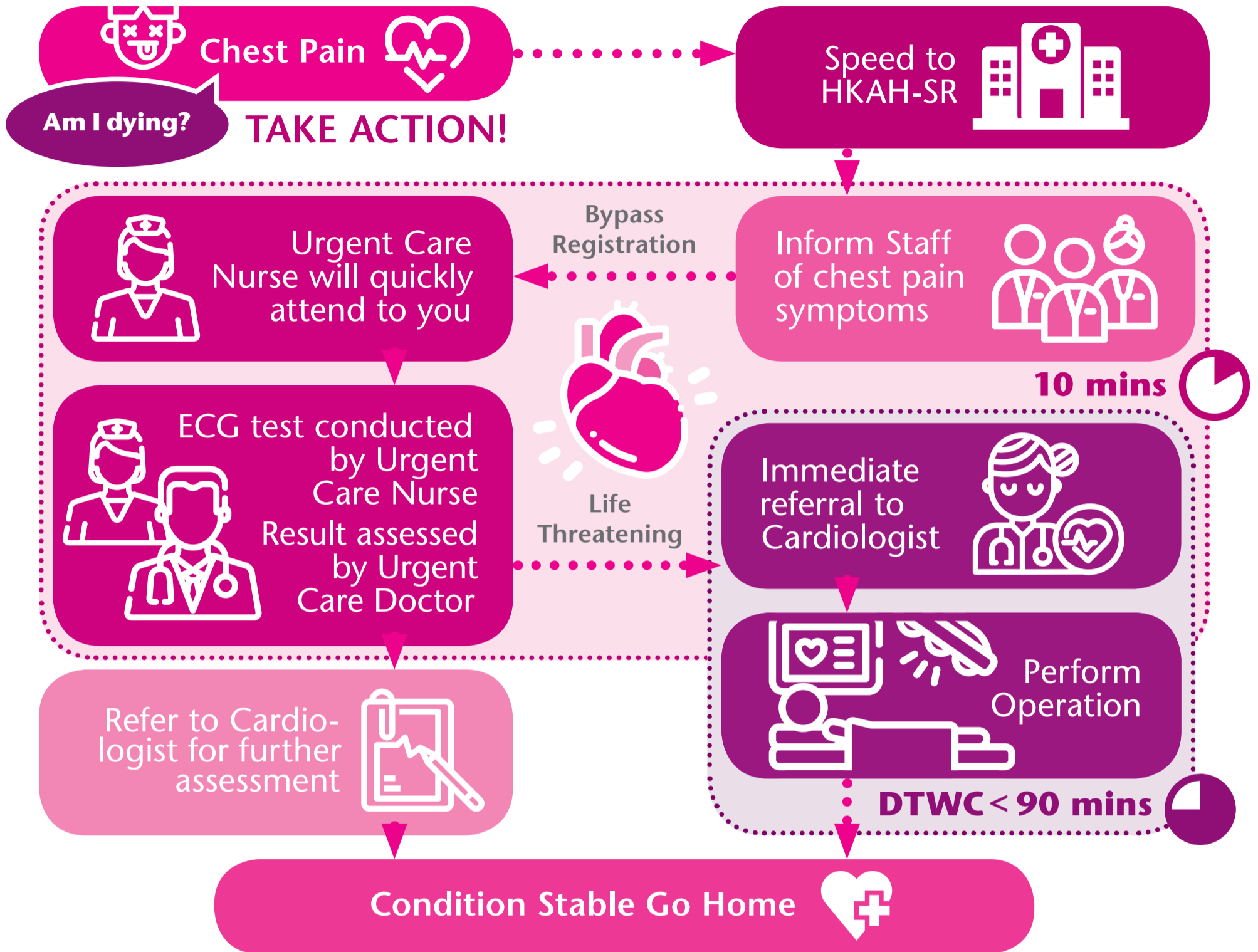
### EVERY MINUTE COUNTS

We will race against time to ensure your safety; no symptom is too small to be assessed – it could save a life! The earlier you receive treatment, the lower the damage to your heart.



## DIRECT EMERGENCY CHANNEL

“ I’m Having Chest Pain Symptoms. What Do I Do? ”



## RAPID ACCESS CHEST PAIN CLINIC



HIGH-LIGHTED FEATURES



- 10 minutes Prompt Assessment
- All-year-round 24/7 Services
- Direct Emergency Channel bypass registration
- Full support by Caring Specialists
- Wide Range of Treatment Packages
- Diagnosis to Wire Crossing Time < 90 minutes

### EVERY MINUTE COUNTS

We will race against time to ensure your safety; no symptom is too small to be assessed – it could save a life! The earlier you receive treatment, the lower the damage to your heart.



## 冠狀動脈疾病現況

2016年死於冠心病共

**1790萬人**

佔全球死亡人數

**31%**



因心血管  
疾病致命的  
個案中

**85%**

由心臟病  
及中風引致



2017年香港

每日平均

**10.6**

人死於冠  
心病



過去10年  
內香港超過

**3萬人**

死於冠  
心病

## 高風險因素

**40  
~  
60**

中年人士  
40-60 歲

糖尿病



血壓高

肥胖



膽固醇

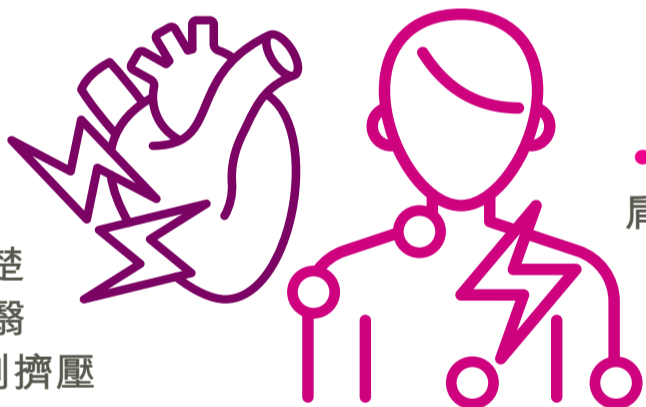
吸煙



體能活動  
不足

## 心胸痛徵狀可隨時發生

- 胸部中央出現痛楚
- 心口鬱悶、感到擠壓



- 痛楚擴散至肩、頸、後頸、手臂或背部
- 痛楚維持數分鐘



- 噁心、暈眩或氣促

## 心胸痛急診中心

**10 MINS**

**24/7**

**中心特色**

**90 MINS**

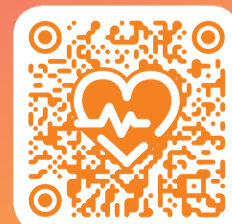
- 10分鐘快速評估
- 24/7 隨時待命
- 快速心胸痛通道
- 跨專科團隊即時支援
- 多元化套餐收費
- DTWC 精確治療指引 < 90分鐘

### 爭分奪秒

快速評估，心胸痛急診中心爭分奪秒，保障患者安全。仔細找出細微

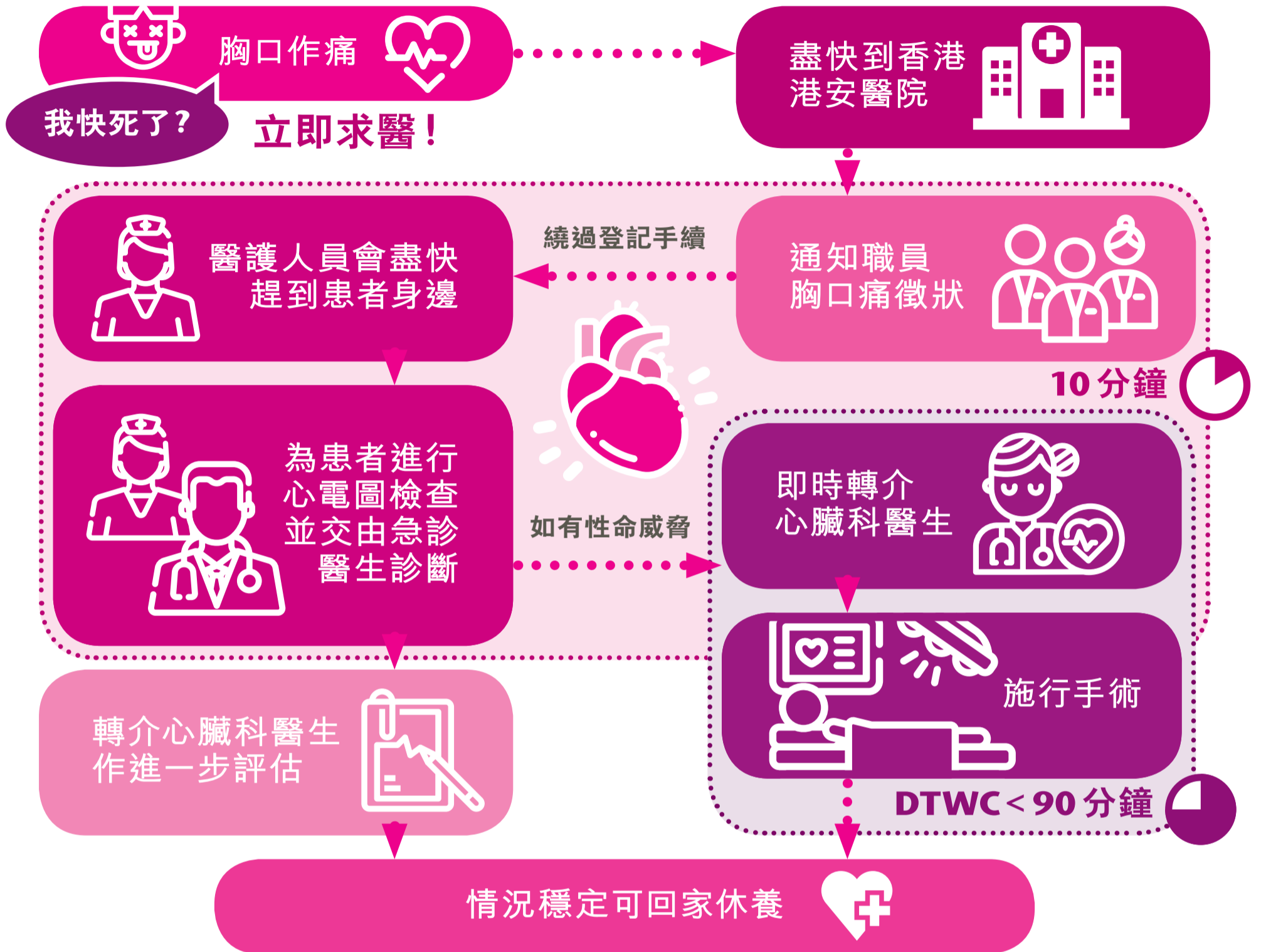


徵狀，讓患者儘早接受治療，減少心臟損傷。



## 快速心胸痛通道

「我感到胸口作痛，應該怎辦？」



## 心胸痛急診中心

10 MINS

24/7

中心特色

90 MINS



- 10分鐘快速評估
- 24/7隨時待命
- 快速心胸痛通道
- 跨專科團隊即時支援
- 多元化套餐收費
- DTWC精確治療指引 < 90分鐘

### 爭分奪秒

快速評估，心胸痛急診中心爭分奪秒，保障患者安全。仔細找出細微



徵狀，讓患者儘早接受治療，減少心臟損傷。

